

architectural interior design study of

# Torre di Necciano

San Ginesio, Le Marche, Italy

August 2016



# Introduction

Page 2 of 15

In this architectural interior design study two of the many possibilities for the interior of “Torre di Necciano” are visualised. The two design cases have many differences. The architects will thus indicate the possibilities are endless.

**Design case A** is a modern variant which utilizes fully the spatial characteristics of Torre di Necciano. The interior suggests a contemporary loft while the typical rural Italian exterior is maintained. The contents of the program are three bedrooms with own bathrooms, an open kitchen and living, a studio / office / lounge, a wellness-area and a “man’s loft”.

**Design case B** is a classic translation of Torre di Necciano to a luxurious Italian manor house. The contents of the program are three bedrooms with own bathrooms, a typical Italian country kitchen, a living, a wine cellar, a library and a wellness-area.

## Disclaimer

No rights can be derived of this document. The constructive possibilities should be examined by a structural engineer and the plan should be judged against the applicable regulations. The intellectual property of these design studies remain the property of Koster Vooges and Studio Rosier.

This design was developed by a partnership between:



Studio Rosier  
Helling 107  
3901 RX VEENENDAAL  
THE NETHERLANDS

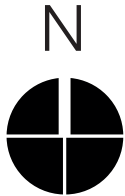
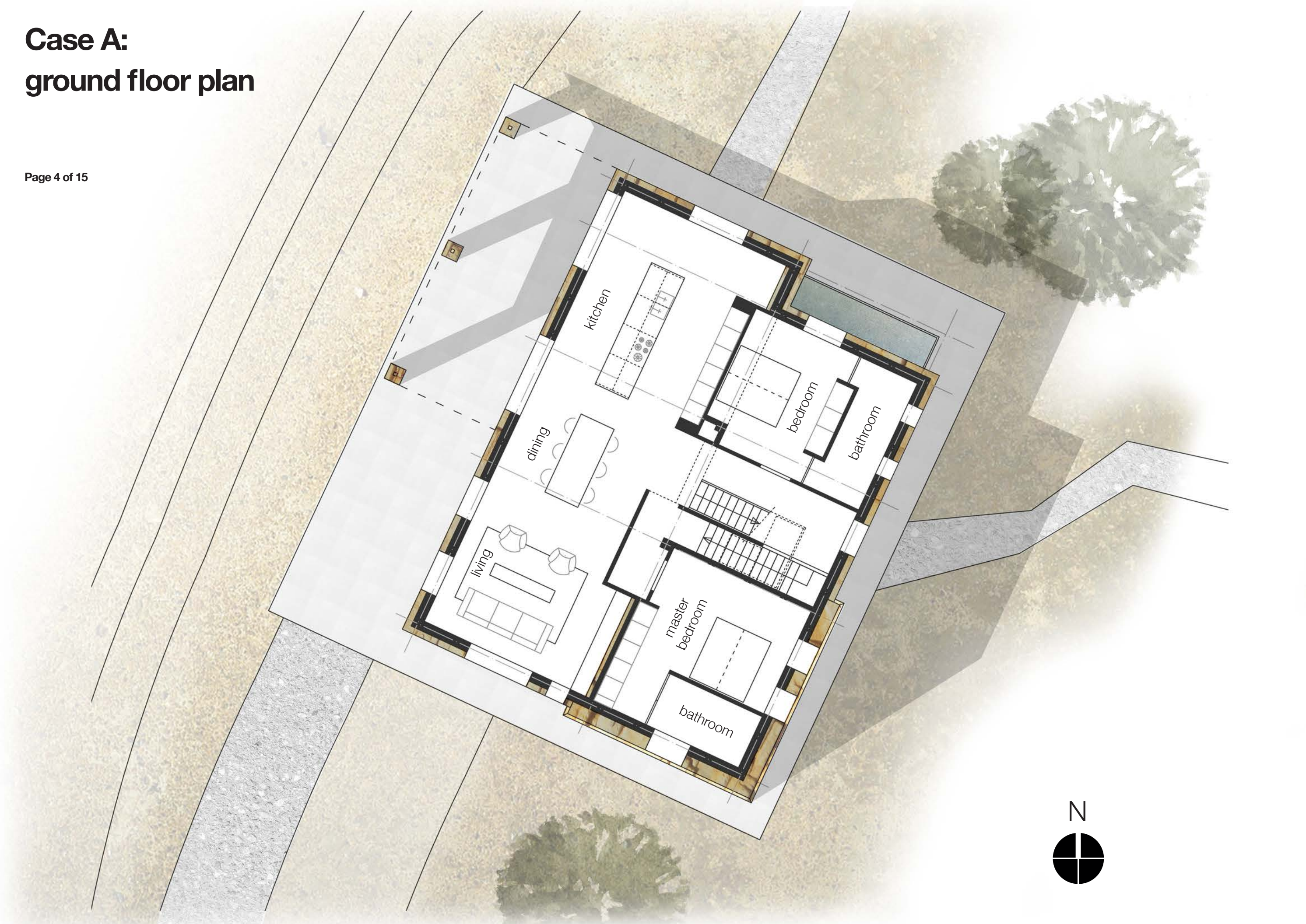
+31 (0) 6 13 13 34 34  
info@studiorosier.com







Case A:  
ground floor plan





# Case A: artist impression

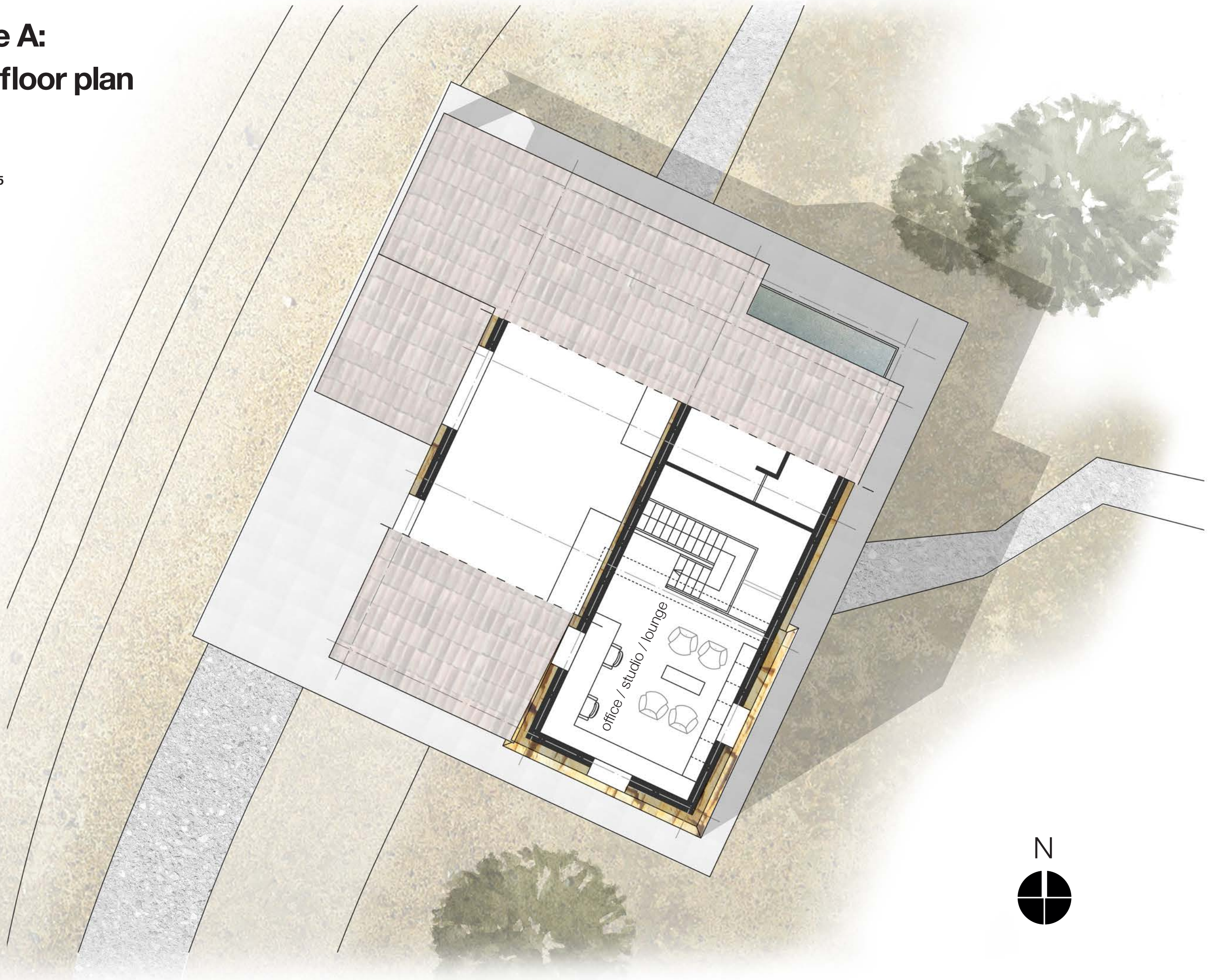
Page 5 of 15





# Case A: first floor plan

Page 6 of 15





Case A:  
basement plan





Case A:  
inspiration



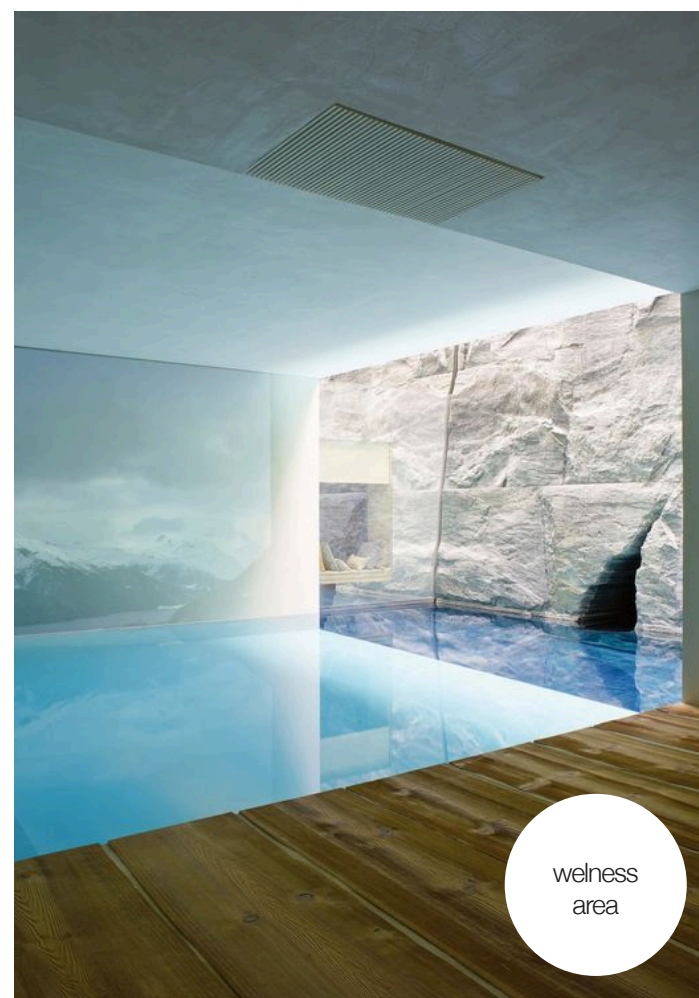


# Case A: inspiration

Page 9 of 15



man's cave



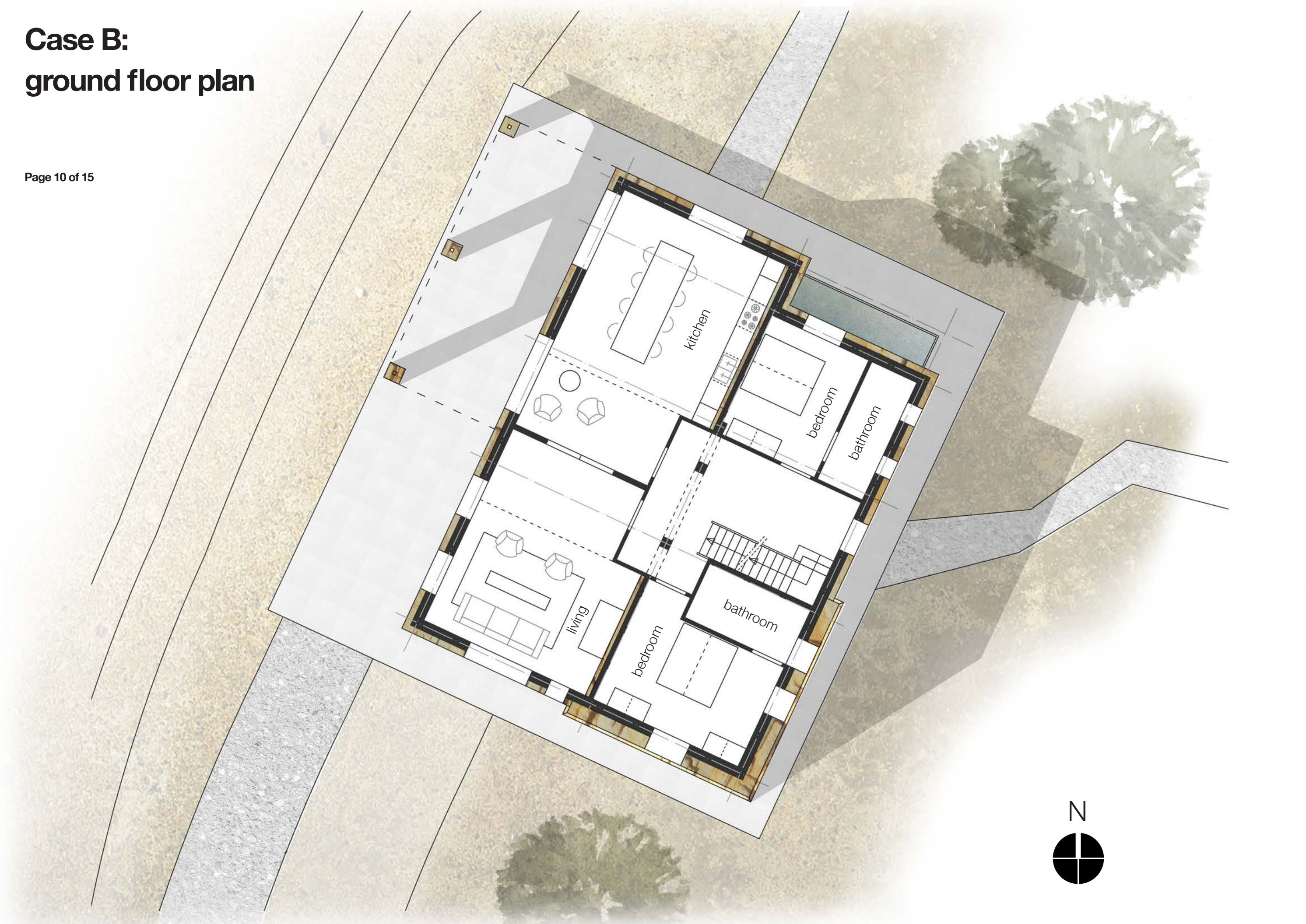
welness  
area



studio /  
office



Case B:  
ground floor plan



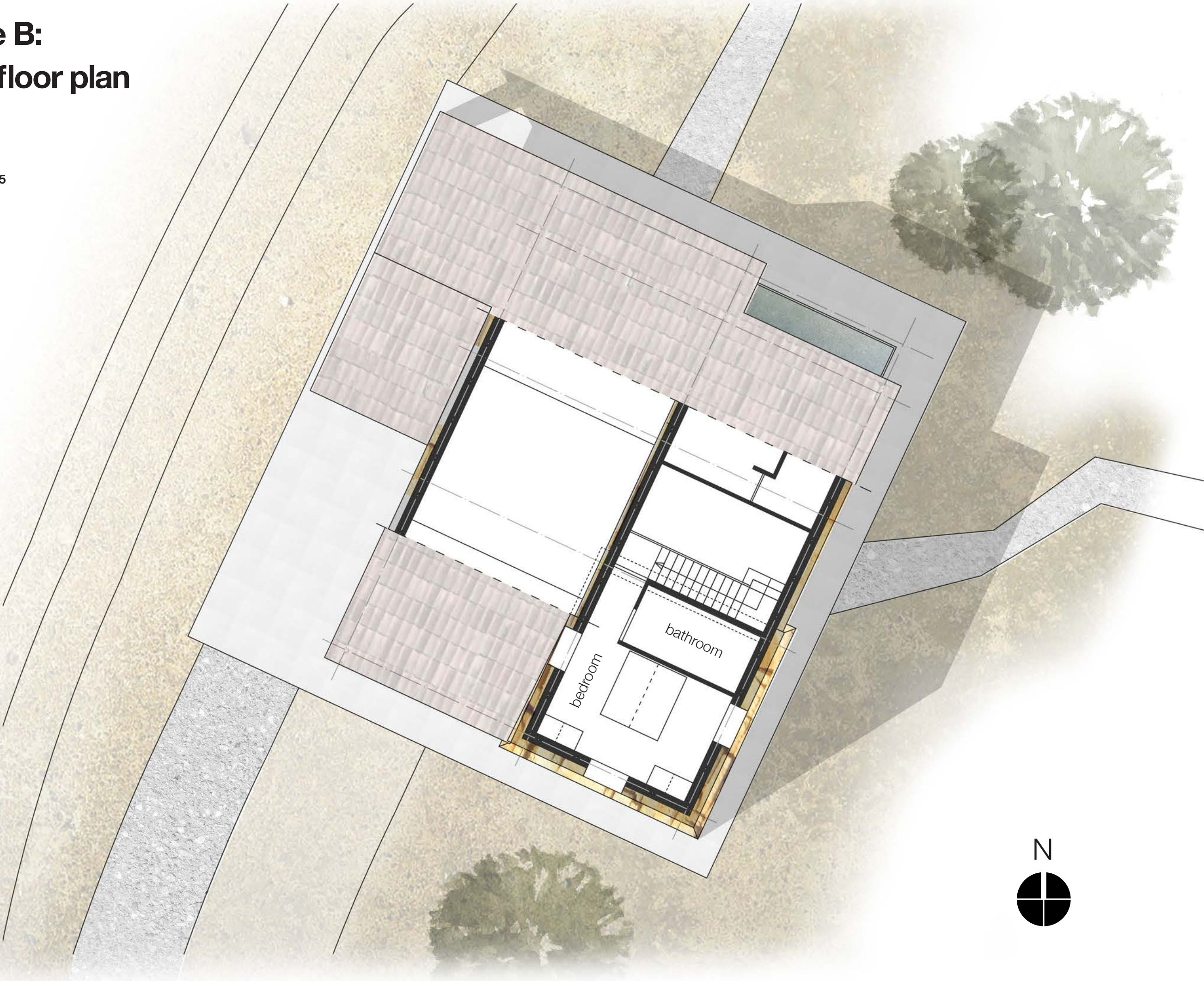


**Case B:**  
**artist impression**





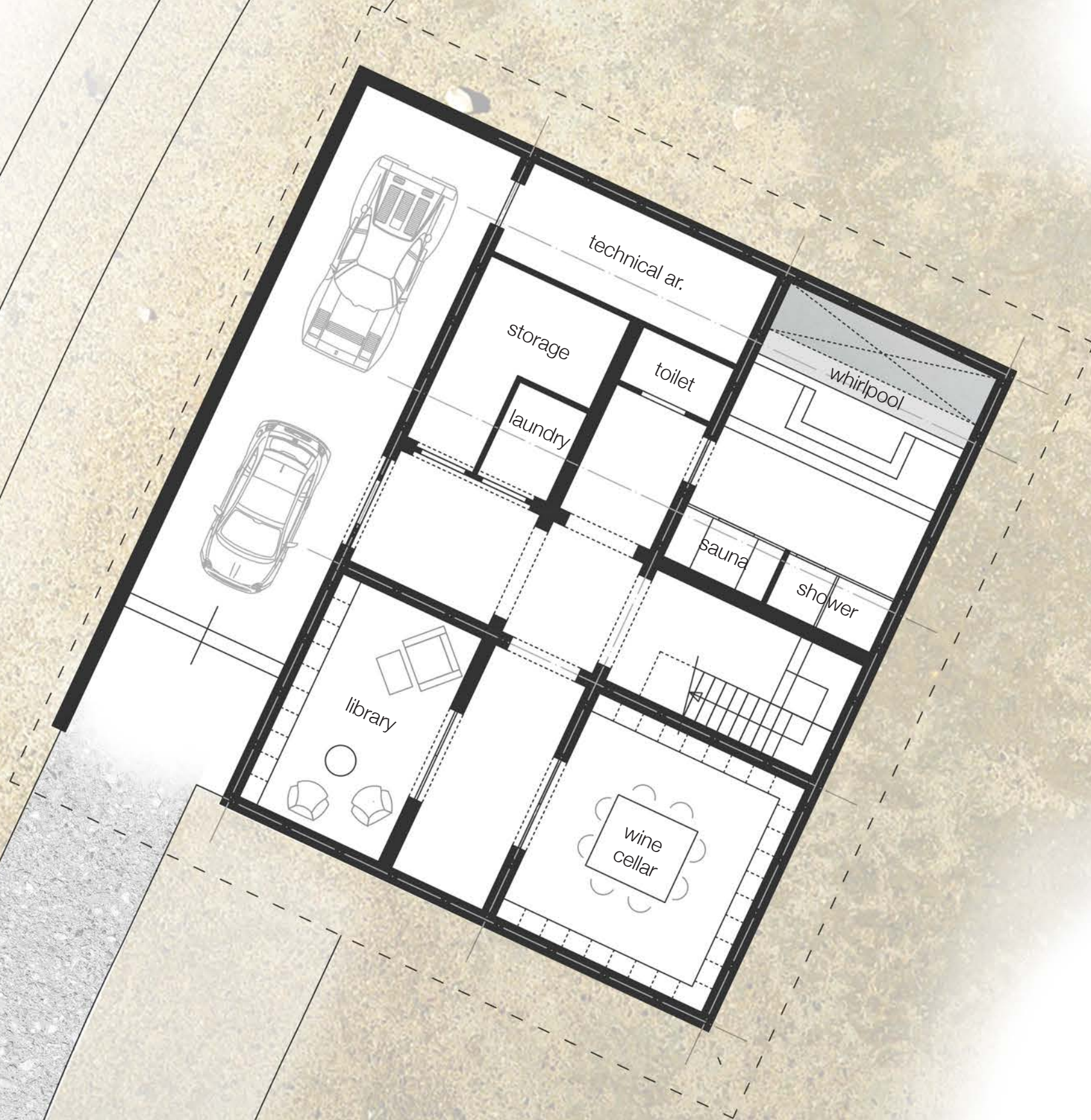
Case B:  
first floor plan





## Case B: basement plan

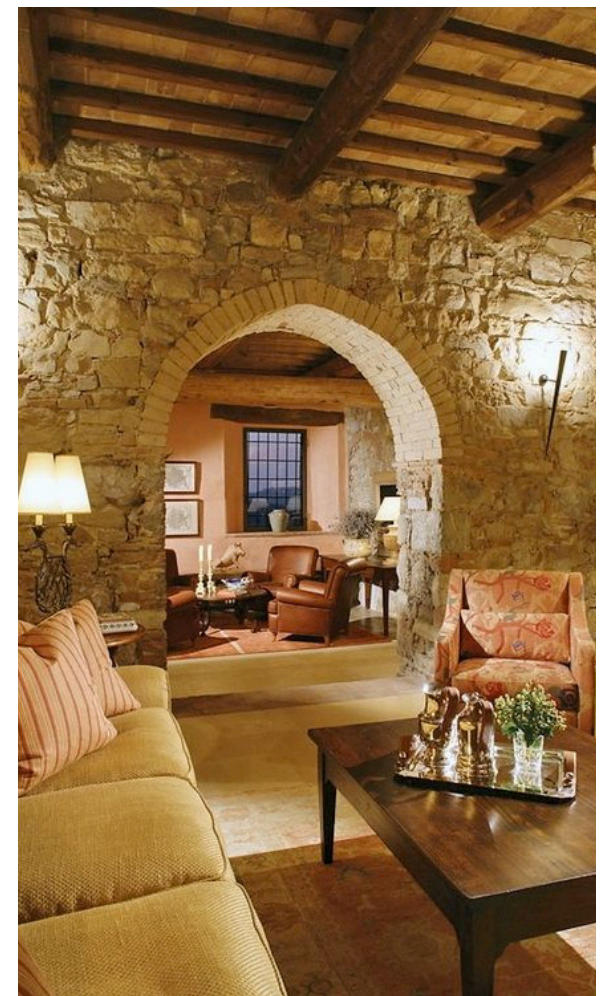
Page 13 of 15





## Case B: inspiration

Page 14 of 15





## Case B: inspiration

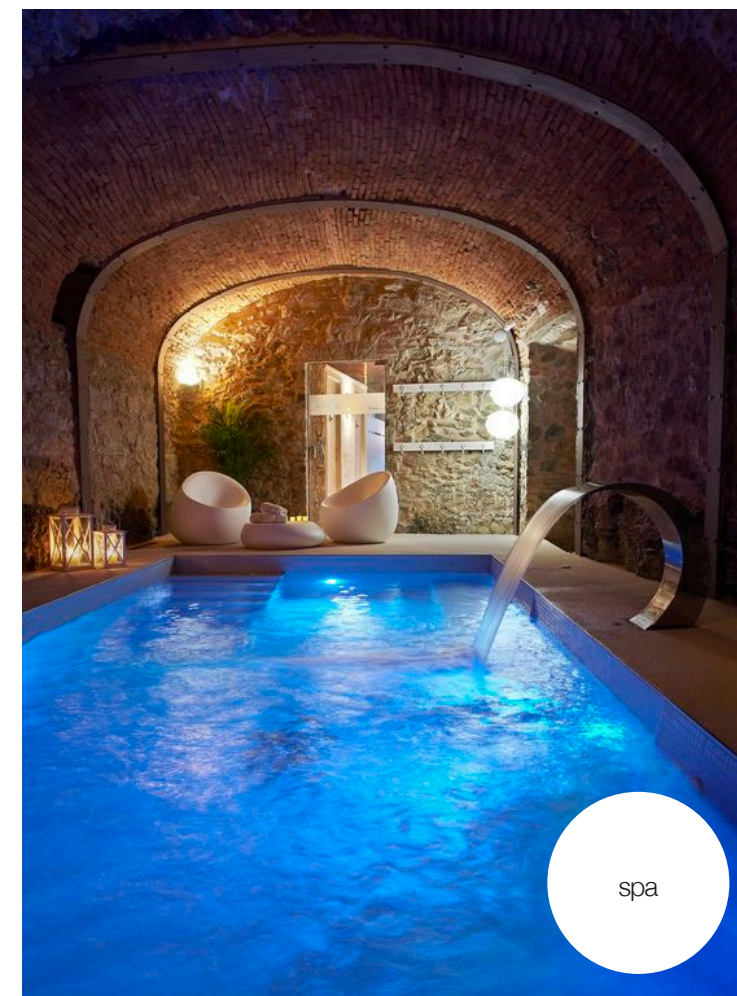
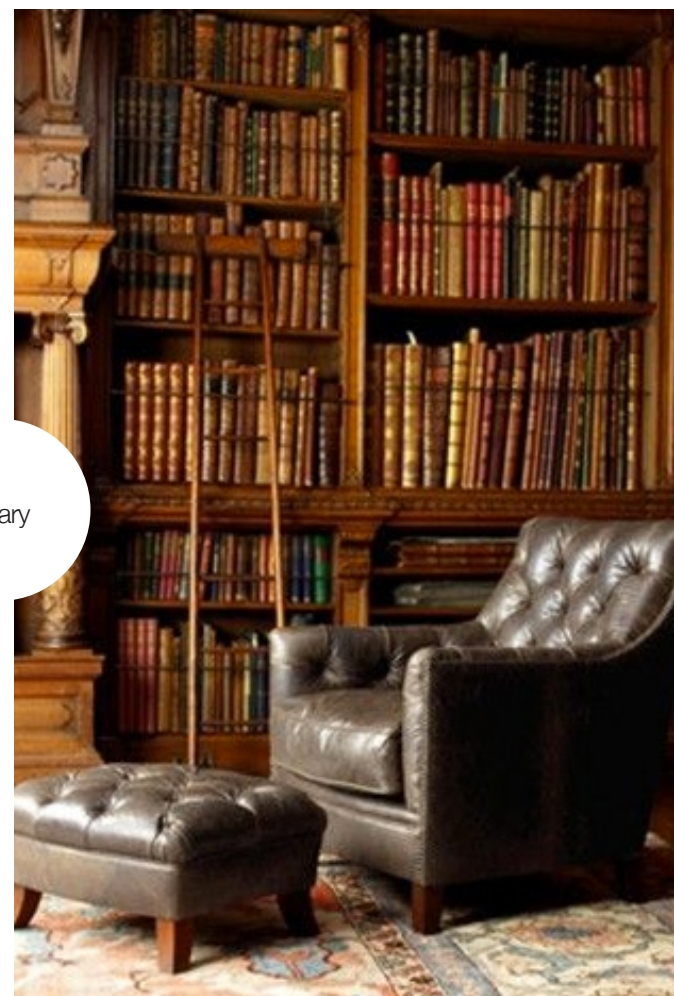
Page 15 of 15



wine cellar



library



spa